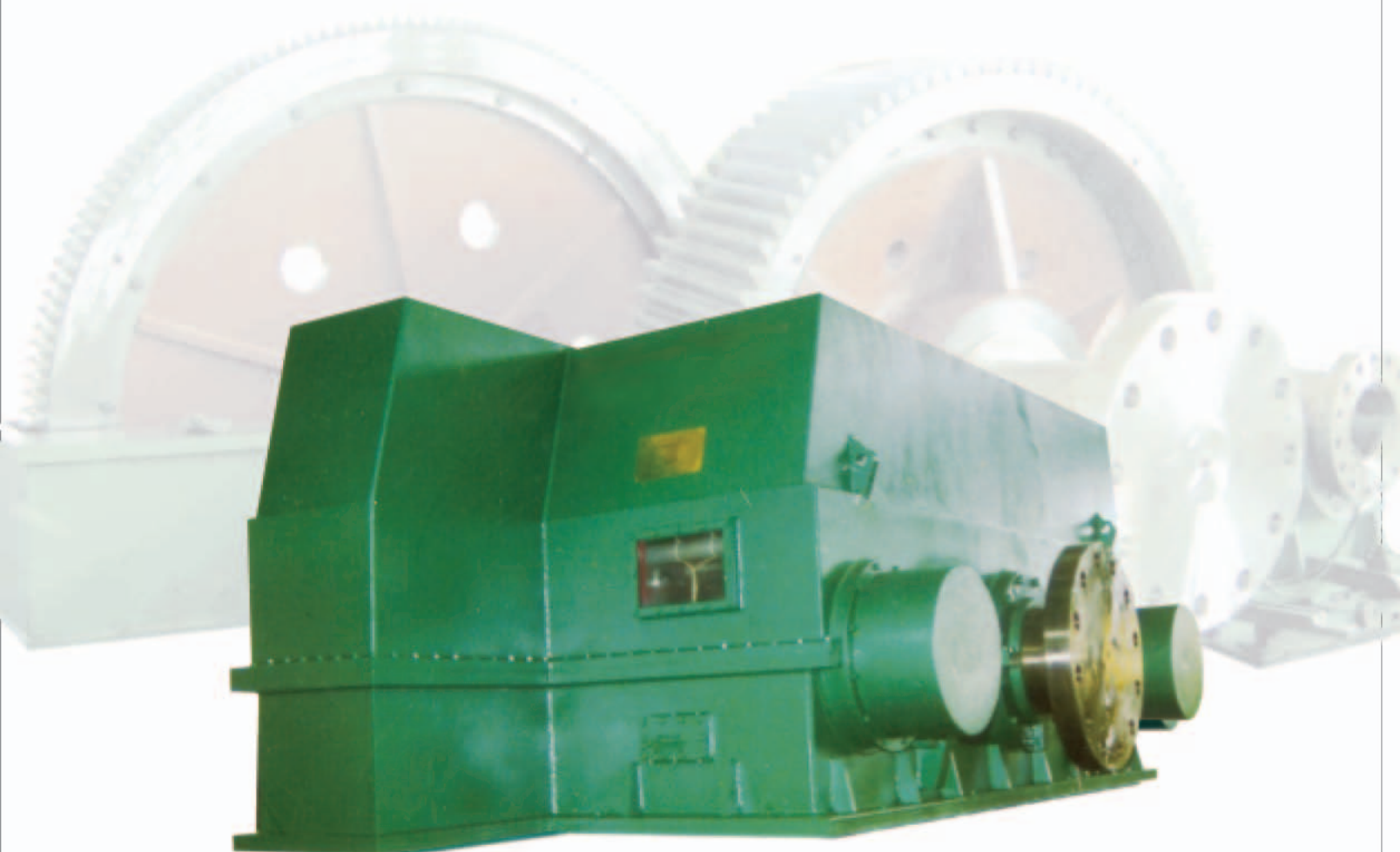


MFY(X)系列中心传动磨机减速机

**MFY(X) SERIES GEAR REDUCER FOR
CENTRAL DRIVING MILL**



南京高精传动设备制造集团有限公司

Nanjing High Accurate Drive Equipment Manufacturing Group Co.,Ltd.

■ 企业简介

南京高精传动设备制造集团有限公司是一家以专业生产高速重载齿轮为主的大型企业，名列中国机械工业核心竞争力 100 强。南高齿的前身为南京机床修理厂，成立于 1969 年；1976 年，改扩建为专业化齿轮生产厂家，并更名为南京高速齿轮箱厂；2001 年，改制为股份有限公司；2007 年在香港上市，股票名称“中国高速传动”本着“步步攀高，孜孜求精”的企业精神，经过四十年的发展和积累，南高齿已逐步壮大为中国齿轮行业公认的龙头企业，在技术、设备、产品性能等方面均处于国内领先水平，正在跨入国际先进行列。公司目前拥有总资产 48 亿元，2008 年销售收入近 40 亿元。

对用户和社会负责就是对自己负责。南高齿建立了覆盖全国的七大销售公司，多年来秉承“责任到位、一次做对”的严谨作风，先后为宝钢、武钢、首钢等国内大型企业供应齿轮产品。南高齿还积极开拓国际市场，产品远销美国、德国、日本等十多个国家。公司产品有：铁路机车齿轮、石化专用齿轮箱、冶金专用齿轮箱、磨煤机齿轮箱、风力发电机齿轮箱等，产品覆盖冶金、建材、发电、化工、矿山、起重、能源、国防等众多领域，并在国内高速重载齿轮箱、矿山通用齿轮箱等市场上占据绝对优势，多项产品填补国内空白。

过程零缺陷，品质百分百。凭借过硬的技术和品质，南高齿先后 92 次获得国家 and 省市科技进步奖，22 个产品被列为高新技术产品。南高齿还在国内率先采用了 ISO1328 和 ISO6336 国际标准，被科技部列为国家 863 计划和 CIMS 应用示范企业。同时，南高齿也按 ISO9001—2008、ISO14001—2004、GB/T28001—2001 的要求建立、实施和保持质量/环境/职业健康安全管理体系。我们的质量方针是：质量第一、顾客至上、优质服务、诚信为本。我们的环境安全方针是：以人为本，保障健康安全；遵纪守法，预防环境污染；持续创新，推进节能减排；和谐发展，树立高齿形象。

卓越的技术源于一流的团队。南高齿十分重视企业研发队伍建设，与国内外多家高校和研究机构建立了合作关系。公司现有工程技术人员 487 名，占职工总数的 30% 以上，其中技师 20 名，高级技工 98 名，教授级高工 26 人，享受政府特殊津贴的专家 5 人。

南高齿坚信“国际品牌才有国内市场”，在技术、设备和管理等方面积极与国际接轨，先后与美国 GE、德国西马克和日本的三菱重工、日立、住友等著名跨国公司建立合作关系。

展望未来，南高齿人豪情满怀，信心百倍。“我们的成员来自世界各地，我们的材料来自世界各地，我们的设备来自世界各地，我们的市场投向世界各地，我们的管理也来自世界各地”。中国的南高齿，必将是世界的 NGC！



Brief Introduction

Nanjing High Accurate Drive Equipment Manufacturing Group Co., Ltd., as one of the 100 most competitive enterprises of Chinese mechanic industry, is a large-scale enterprise, which mainly produces high-speed & heavy-duty gears. Founded in 1969, NGC used to be Nanjing Machine Tool Repairing Plant. In 1976, the factory was expanded and transformed to a professional gear-making company, and with a new name: Nanjing Gearbox Factory; In 2001, It was altered into an incorporation; In 2007 the shaves of china "High Speed Transmission" were listed in HongKong With the corporate spirit of "climbing up the summit step by step, striving after the perfection bit by bit", after 40 years' development and accumulation, NGC has become a widely recognized leading company in Chinese gear industry with strong advantages in technology, equipments and quality, and is stepping into international advanced ranks.

Being responsible to customer and society means being responsible to ourselves. NGC has established seven regional marketing branches, and formed a selling and service network covering the whole country. These years, NGC is also actively developing international market, its products are far sold to more than ten countries, including Japan, US, Germany, Italy, Finland, etc.. The major products of NGC are specialized petrochemical gearbox, specialized milling gearbox, construction grinding gearbox, coal grinding gearbox, and wind power gearbox etc., covering various industries and fields, such as milling, construction material, power, mine, crane, transportation, environmental protection, mechanical engineering, energy, national defense, scientific research. In domestic market of high-speed & heavy-duty gearbox, NGC has obvious advantages and takes most part of the market share. NGC has bridged several technical gaps in domestic gear industry.

Inspired by the idea of "non-defect process yields perfect quality", NGC has won 92 awards in science and technology of both national level and local level, and 22 of its products are national level high & new technology products. NGC was one of the first Chinese companies to adopt ISO1328 and ISO6336, and was listed by the Ministry of Science and Technology as a model enterprise of the 863 State Plan and CIMS application. Meantime, based on the requirement of ISO9001-2008, ISO14001-2004, GB/T28001-2001, NGC built up and carried on and maintained the safety management system for the Quality, Environment and Career health & safety. Our principle for the quality is as follows: QUALITY FIRST, CUSTOMER PARAMOUNTCY, KNIGHT SERVICE and HONESTY FOREMOST. Our principle for the environment safety is as follows: people oriented and health & safety guaranteed; following the law and regulation and preventing the environment pollution; persisting the innovation and pushing up energy-saving and ejection-decreasing; developing with harmony and building up the image of NGC.

Advanced technology is derived from an excellent R&D team. NGC has put great efforts on the construction of R&D team, and has established close cooperative relations with many colleges and institutes. NGC possesses 487 engineers and technicians, which account for over 30% of the whole staff. Among them, there are 98 high level technicians, 26 professor-level engineers, 5 national level experts.

Only an international brand can exist in domestic market. Based on this concept, NGC has mapped its global strategy, and integrated with international standards in technology, equipments and management. NGC has established cooperative relations with many transnational companies, such as GE, SMS Demag, Mitsubishi Heavy Industries, Hitachi Semiconductors, Sumitomo.

Looking into the future, facing the world, NGC is filled with strong confidence. "Our members are from all over the world. Our materials are from all over the world. Our equipments are from all over the world. Our markets are scattered all over the world, moreover, our management thought and technology also must be imported from all over the world." The NGC of China, will become the NGC of the world in the near future.

性能与特点:

MFY、和MFYX系列中心传动磨机减速机是我公司充分吸取了日本、丹麦、德国、美国等先进工业国家的先进技术,总结了国内设计制造的大型磨机减速机的经验和不足,又较好的结合了本公司的特点,开发、设计的新型低速重载齿轮箱。

MFY系列磨机减速机在结构上采用功率分流,两级减速。同心传动。

MFYX系列磨机减速机在结构上采用三级减速,第一级采用行星齿轮传动,第二、三级采用MFY系列磨机减速机的结构形式,行星传动技术是在国外已成功的基础上进行设计的。

MFY和MFYX系列磨机减速机全部采用硬齿面、渗碳、淬火、磨齿,精度达6级(ISO1328-1995.1997)以上,所有零部件的设计寿命均在10年以上,其中齿轮为高可靠度设计,设计寿命为持久寿命,滑动轴承为永不磨损型。此外,还设有安全可靠的电控与检测系统,可实现全部轴承温度巡检、振动检测和计算机控制。

MFY和MFYX系列磨机减速机具有体积小、重量轻、传动能力大,使用寿命长的特点,安装维护方便。操作简单容易、传动平稳,噪音低。由于实现了系列的标准,系列化通用设计、对用户的维护保养及备件供应提供了更加方便、有利的条件。由于充分吸取了国内外同类产品的先进经验,因而更加先进、可靠。

Characteristics & Features:

MFY & MFYX series gear reducers with center drive configuration are the new type of gearboxes with feature of low speed, heavy duty, which are designed and developed on basis of rich experience of gear manufactures in China in design-ing and manufacturing large gear boxes for cement grinding mill and advanced technology from Japan, Demark, Germany, U.S.A and other advanced industry countries.

The configuration of MFY series reducers are two-stage, locked trained type and center drive and that of MFYX series reducers are three-stage, in which the construction of the first stage is planetary gear transmission which has been proved to be successful, and that of the second and third stage is the same as that of MFY series reducers.

MFY&MFYX series reducers are all case-hardened tooth flanks by carburizing quenching following by grinding and the quality of gear is class DIN 6 (ISO1328-1995.1997) or better. The design life time of all parts will be more than 10 years, in which the life time of the gear is based on unlimited, the life of the plain bearing is almost no-worn. The arrangement of the safe and reliable electric control and measuring system makes the temperature scanning, the vibration test and the computer control of all bearing are being realized.

The advantages of the MFY & MFYX series reducers are compactness, light weight, high capacity of transmission, long service life, smooth operation, low noise, easy operation, less maintainance and easy spare parts available due to engineering concept of standardization, serial and commonization, and it is more reliable and advanced due to mixture of proved advanced experience both home & abroad.

适用范围:

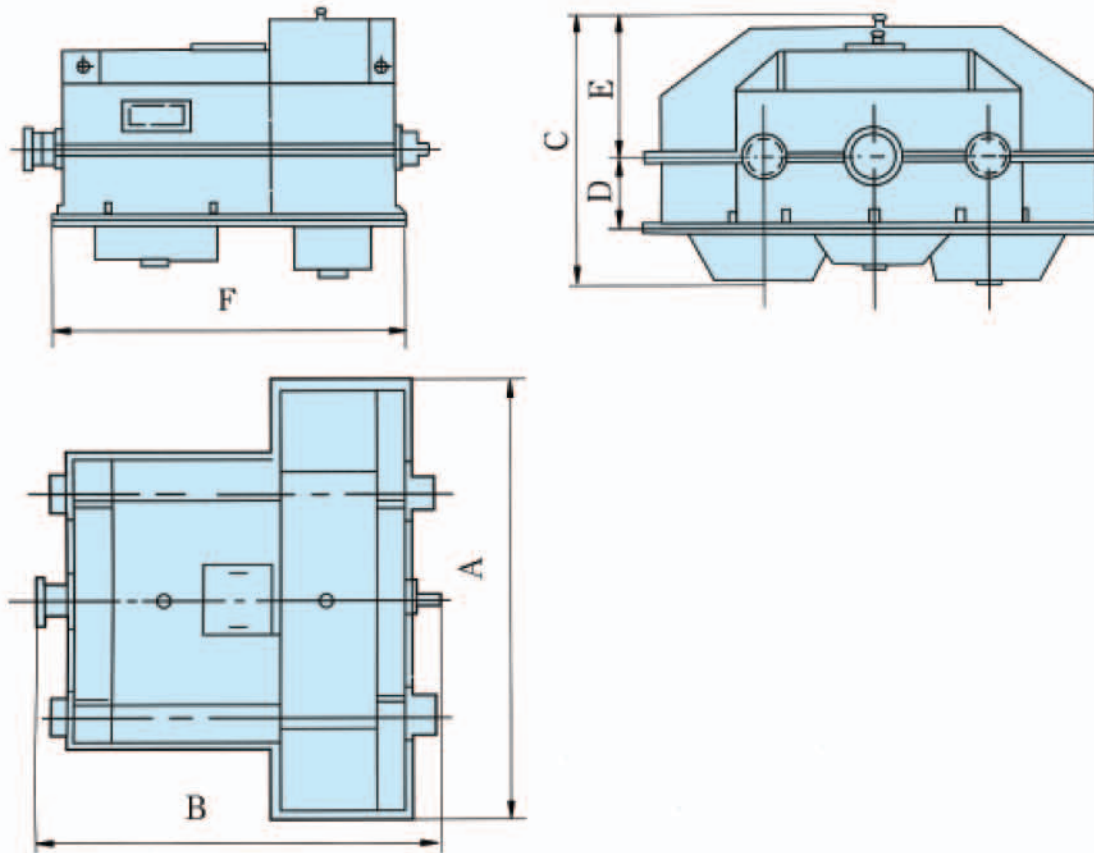
MFY和MFYX系列中心传动磨机减速机主要用作建材行业水泥厂用的大型磨机减速机,同时也可作为其它行业的减速机用。

Applications:

MFY&MFYX series reducers with center drive configuration are mainly used in cement grinding mill for construction material industry and also used for other use.

MFY 系列技术性能及外形尺寸

Outline Dimensions and Features for MFY Series



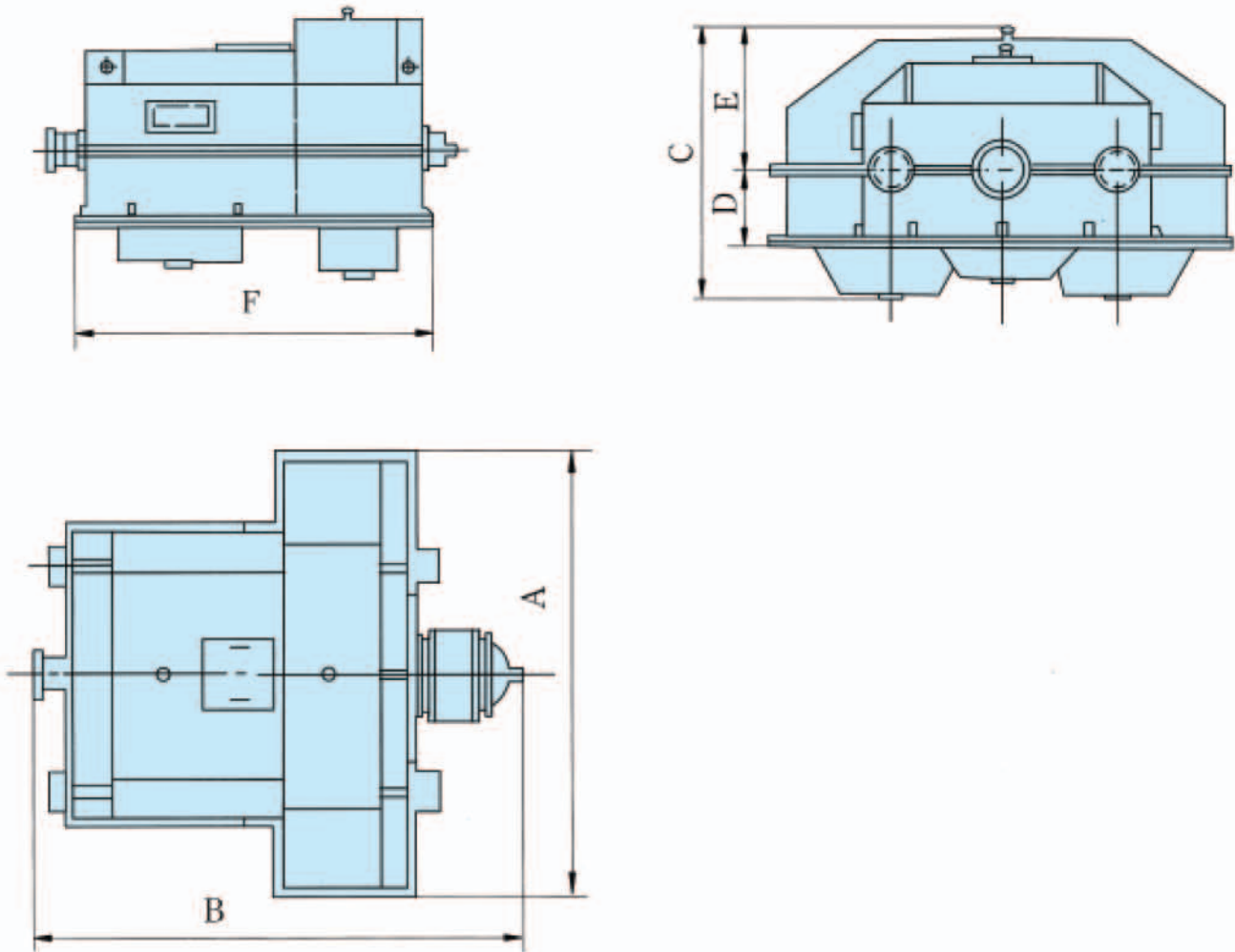
MFY 系列中心传动磨机减速机(二级)

Features For MFY Series Reducer With Center Drive Configuration (two-stage)

序号 No.	型号 Type	传递功率 Transmission power(kw)	输入转速 Input speed r/min	输出转速 Output speed r/min	外形尺寸 Dimension(mm)						重量 Weight(t)	说明 Description	备注 Remark
					A	B	C	D	E	F			
1	MFY80	800	740	20.6 19.8 19.3	3800	2385	2085	600	1100	1800	23.7	两级	此样本数据仅供参考，最终以设计图纸为准
2	MFY100	1000		19.5 17.6	4216	2380	2345	600	1225	1770	26.3		
3	MFY125	1250		18.85 16.9 17.6	4500	2645	2405	600	1275	2015	32.3		
4	MFY140	1400		18.3 17 16.5	4500	2645	2405	600	1275	2015	34.8		
5	MFY160	1600		17.1 16.8 16.5	4840	2475	2585	600	1305	1860	37.3		
6	MFY180	1800		16.5	5040	2475	2585	600	1305	1860	39		
7	MFY200	2000		16.3 15.6	5200	2840	2735	650	1355	2100	43.5		
8	MFY250	2500		16.5 16.4 15.75 15 16.26	5400	2840	2805	650	1455	2100	46.5		
9	MFY280	2800		15 15.78 16.5	5760	2840	2933	650	1485	2100	47.5		
10	MFY300	3000		15	6130	2925	3086	710	1555	2185	55		
11	MFY320	3200		15	6130	3035	3066	710	1555	2295	60.5		
12	MFY355	3550		15.8 16	6220	3280	3220	650	1685	2560	71		
13	MFY380	3800		15 15.6	6220	3410	3220	650	1685	2560	72.2		
14	MFY400	4000		15 14.5	6620	3590	3480	710	1885	2850	85.5		
15	MFY420	4200		15 14.5	6620	3590	3480	710	1885	2850	87.4		
16	MFY450	4500	740	15.2	6620	3590	3480	710	1885	2850	88.9	三级	
17	MFY480	4800	895	15.2 14.5	5500	4270	3110	710	1570	3527.5	101		

MFYX 系列技术性能及外形尺寸

Outline Dimensions and Features for MFYX Series



MFYX 系列中心传动磨机减速机(三级)

Features For MFYX Series Reducer With Center Drive Configuration (three-stage)

序号 No.	型号 Type	传递功率 Transmission power (kw)	输入转速 Input speed r/min	输出转速 Output speed r/mln	尺 寸 Dimension(mm)						质 量 Weight (T)	备注 Remark
					A	B	C	D	E	F		
1	MFYX I60	1600	1000	17.1 16.75 16.5	4750	3475	2300	650	1170	2075	37	
2	MFYX 180	1800		16.5							39	
3	MFYX 200	2000		16.6 16.3 15.6	5000	3650	2300			2150	41	
4	MFYX 225	2250		16 16.6 17							43	
5	MFYX 250	2500		740							16.5 16.4 15.75 15 16.26	3850
6	MFYX 280	2800	1000	15.1 16.3 16.6	5300	4170	2500	710	1250	2570	48	
7	MFYX 320	3200		15.1 15.8 16.3							52	
8	MFYX 380	3800		14.5 15.1 15.6	5600	4750	2600	800	1350	2750	58	
9	MFYX 420	4200		740							14.5 15.1 15.6	63
10	MFYX 450	4500		1000	14.5 15.1 15.6	5900	5360	2800	800	1500	3000	66
11	MFYX 500	5000	740	14.5 15.1 15.6	72							
12	MFYX 560	5600	740	14.5 15.1	6220	5700	3000	850	1650	3250	79	

订货选型说明

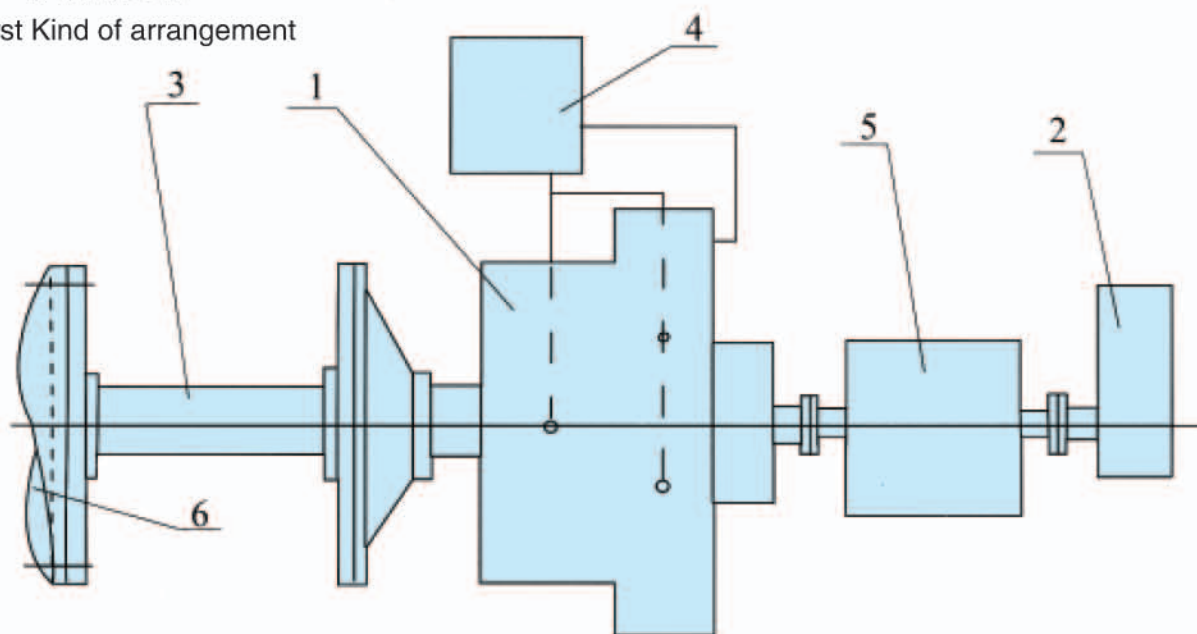
Selection and Ordering Directions

MFY 和 MFYX 系列减速机及其配套设备均有两种布置形式，如下图示：

Two Kinds of arrangements of MFY&MFYX series reducers and their accessories are shown below.

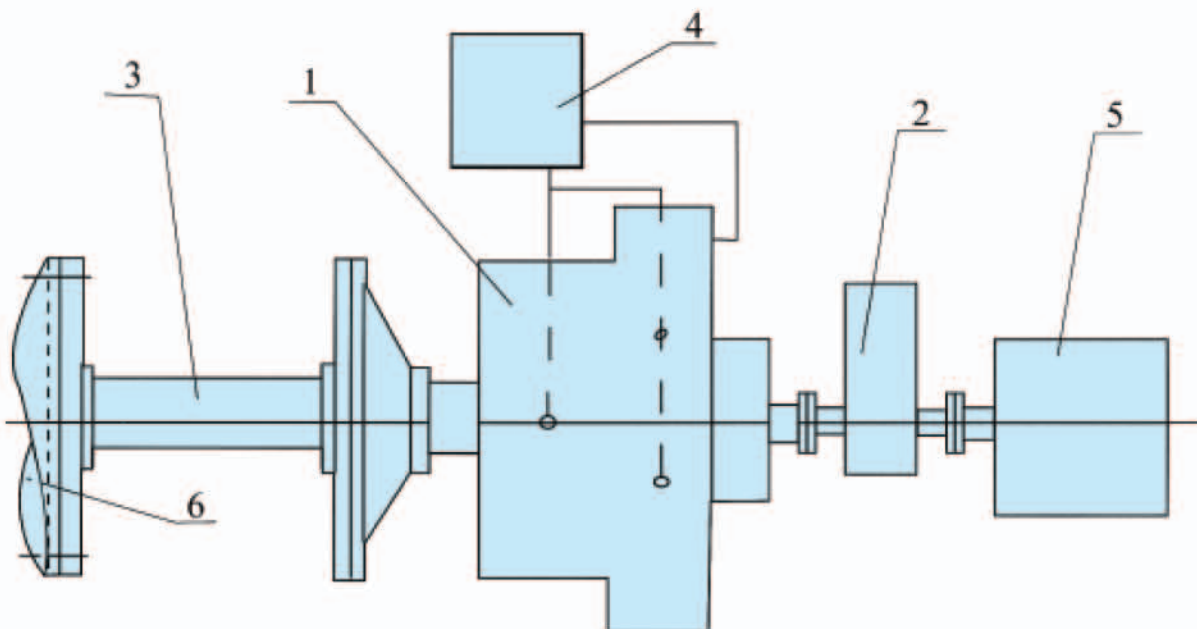
第一种布置形式：

First Kind of arrangement



第二种布置形式：

Second Kind of arrangement



1、主减速机 2、慢速减速机 3、传动轴与膜片联轴器 4、稀油站 5、主电机 6、磨机端

1.Main Reducer 2.Inching Device 3.Shaft&Diaphram Coupler 4.Lubrication Station 5.Main Motor 6.Mill

订货选型说明

Selection and Ordering Directions

本厂可根据用户不同要求按类别进行供货见下表：

According to customer's requirments, we can supply products in different ways as listed below

供货代号 Code of supply	供货内容 Range of supply	备注 Remark
I	1+4	
II	1+2+4	
III	1+2+3+4	通常订货内容 Ordering normally
IV	1+2+2+4+5	

订货须知：

- 订货内容中：主减速机中含输入联轴器，慢速减速机中含慢速电动机，稀油站中含电控柜，仪表柜，此外还包括地脚螺栓、垫铁、各种管系、专用工具、备件等等。
- 稀油站一般安放在车间地平面上，无须地脚螺栓。还可根据用户要求安装在车间的其它位置。
- 电控部分根据用户要求，有多种方案可选择。
- 表中的“输出转速”为已实际使用过的磨机转速，若变化较大，须与我厂联系。
- 设备安装尺寸以订货时的基础安装图为准。
- 本厂可根据用户要求进行专门设计制造，特殊订货。

Ording Guidance:

- Input coupling is included in Main gear box , motor for inching device is included in inching reducer , electric cabinet is inclued in lubrication station, all fout bolts, washers, piping, speclal tools and spare parts are included.
- Lubrication station can be put directly on floor in workshop without foot bolts or in any other proper plate on customer's requirments.
- Various of electric cabinets can be avaiable different for selection by customers.
- “output speed” given in the table refers to the actual speed of grinding device which has been used on worksite, please cousult us as the different speed needed.
- Mounting dimensions of device should be on those stipulated on purchase order.
- We can also design and manufacture products on customer's special requirments.

设备介绍

Equipment Introduction



质量体系认证证书

QUALITY SYSTEM CERTIFICATION

德国“KLINGELNBERG”AMK-855 螺旋伞齿轮切齿机

加工直径 $\phi 1200$

大端模数 M27

AMK855 bevel gear cutting machine from KLINGELNBERG CO Germany max dia $\phi 115$ module Mt27

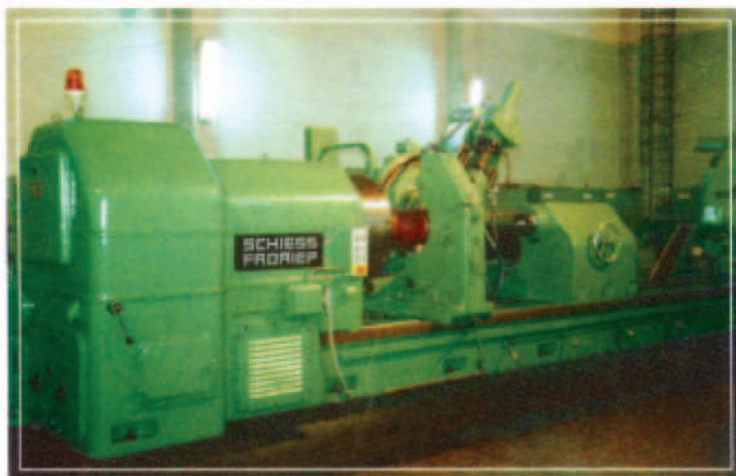


德国“HOFLER”数控展成磨齿 机群

加工直径最大分别为 $\phi 2000$ 、 $\phi 4000$

模数分别为 M27、M34

HOFLER CNC gear grinder from
HOFLER CO Germany Max dia is $\phi 2000$ 、 $\phi 4000$,
Module is M25, M34



德国“SCHIESS”大型透平滚齿机群

型号 RF-10、RF-30S

加工直径最大分别为 $\phi 1000$ 、 $\phi 3000$

模数为 M12、M16

SCHIESS RF-10, RF-30S hobbing machines
from Germany

max diameter $\phi 1000$ 、 $\phi 3000$

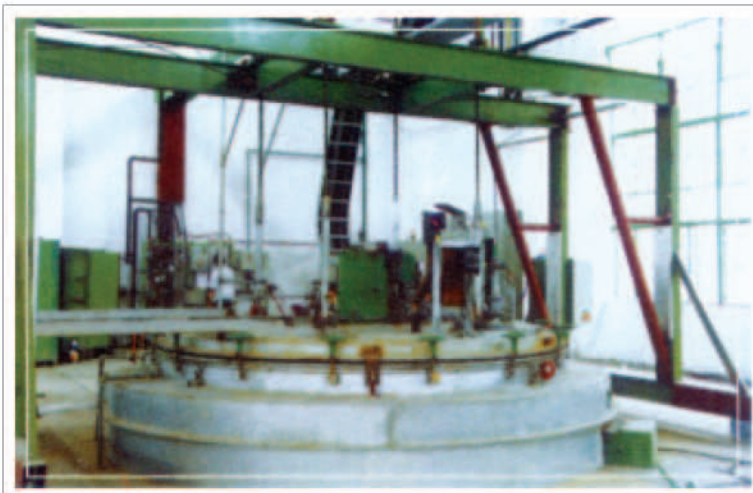
Module M12, M16

瑞士“MAAG”磨齿机群

加工直径从 $\phi 20$ 到 $\phi 900$

模数从 M1、M20

MAAG gear grinder from MAAG CO Swiss Dia is
 $\phi 20$ - $\phi 900$ mm Modvieis M1-M20



热处理设备

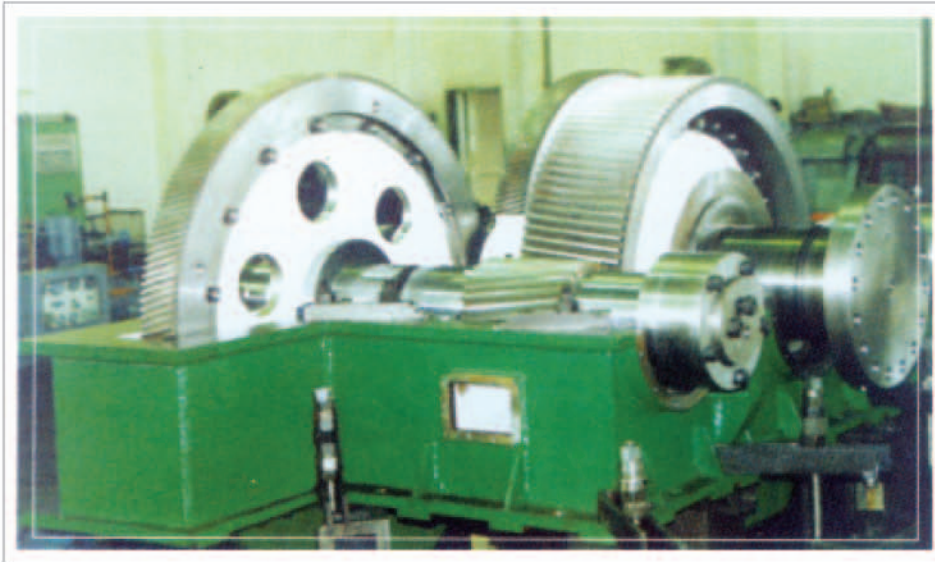
分别从德国和奥地利进口

规格分别为 $\phi 1500 \times \phi 4000$ 、 $\phi 2800 \times \phi 2000$ 、 $\phi 4000 \times \phi 2000$ 、 $\phi 1600 \times \phi 5500$

Heat-treatment equipment imported from Germany
and Austria specification is $\phi 1500 \times \phi 4000$ 、 $\phi 2800$
 $\times \phi 2000$ 、 $\phi 4000 \times \phi 2000$ 、 $\phi 1600 \times \phi 5500$

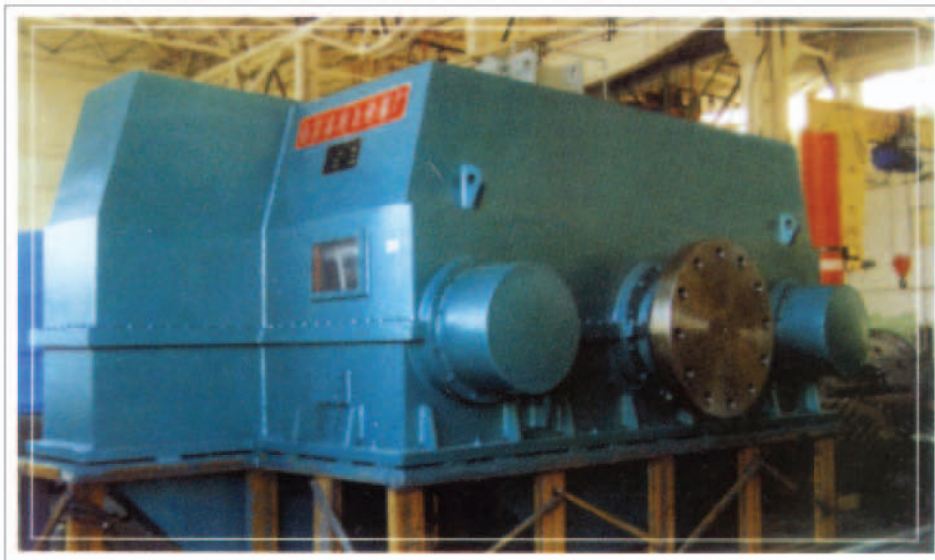
产品介绍

Product Introduction



装配中的大型减速机

The large reducer in assembling



大型减速机待发货

The large reducer being delivered from the Company



南京高精传动设备制造集团有限公司

Nanjing High Scurate Drive Equipment Manufacturing Group Co.,Ltd.

地址：中国南京中华门外小行

邮编：210012

电话：0086/25/52472093

传真：0086/25/52412731 52425696

网站：<http://www.cnngc.com>

电邮：xxzx@cnngc.com

Address:Zhonghuamenwai,Xiaohang, Nanjing,P.R.C.

Zip code:210012

Tel:0086/25/52472093

Fax:0086/25/52412731 52425696

<http://www.cnngc.com>

E-mail:xxzx@cnngc.com