



南京高精传动设备制造集团有限公司

南京中华门外小行尤家凹3号 210012 | 电话: 025-52472093 / 52472106

传真: 025 52425696 | <http://www.ngc.com.cn>

Nanjing High Accurate Drive Equipment Manufacturing Group Co.,Ltd

Xiao Hang, Zhong Hua Men Wai, Nanjing, P.R.C. 210012 | Tel: 025-52472093 / 52472106

Fax: 025-52425696 | <http://www.ngc.com.cn>

目录

I Contents

03	公司介绍
05	ZT120榨糖机
07	ZT150榨糖机
09	ZT180榨糖机
11	ZT320榨糖机
13	行星榨糖机齿轮箱
15	先进的加工设备
22	榨糖行业用齿轮箱业绩表

03	Company Profile
05	ZT120 Sugarcane presser
07	ZT150 Sugarcane presser
09	ZT180 Sugarcane presser
11	ZT320 Sugarcane presser
13	Planetary Gearbox for Sugarcane Press Machine
15	Up-to-date Machining Equipments
22	Reference list for the gearbox used in the sugarcane pressing industry

中国传动创造的中国之最

Reference list for the gearbox used in the sugarcane pressing industry

最大传递功率：55000 Kw
 最大节圆线速度：176 m/s
 齿轮精度：最高达ISO1328标准之3级
 最高转速：67000 rpm
 最大输出扭矩：750 T·m
 硬齿面齿轮的最大模数：40 mm
 硬齿面齿轮最大直径(焊接)：4000mm
 渗碳硬化层层深：最深 7 mm.

Max. transmission power : 55000 Kw
 Max. line speed at pitch circle : 176 m/s
 Gear precision : can reach Grade 3 of ISO1328
 Highest rotation speed : 67000 rpm
 Max. transmission torque : 750 T·m
 Max. module of hard flank gear : 40 mm
 Max. diameter of hard flank gear(welded) : 4000mm
 Case depth of carburization : max 7 mm.

公司介绍

CHINA TRANSMISSION

南京高精传动设备制造集团有限公司（以下简称中国传动）是一家专业从事研发、制造和分销各类机械传动设备的企业，是中国传动设备领域中颇具实力的大型骨干企业。公司前身为南京机床修理厂，成立于1969年；1976年改扩建为专业化齿轮生产厂家，并更名为南京高速齿轮厂；2001年改制为股份有限公司；2007年在香港上市，股票名称“中国高速传动”。

公司本着“步步高，孜孜求精”的企业精神，经过四十多年的发展和积累，逐步壮大为行业公认的龙头企业。公司产品覆盖冶金、建材、电力、新能源、轨道交通、船舶、矿山、化工等多个领域。在技术、设备、产品性能等方面均处于世界领先水平。近年来，公司通过持续高效的技术改造和扩大自主创新的研发投入以及在制造工艺上的精益求精，不断开发出新的产品，使公司步入了快速发展的道路，各项经济指标呈现出良性增长趋势，在全球工业齿轮行业中位列第二。

卓越的技术源于一流的团队。中国传动拥有南京高精传动设备制造集团有限公司、南京高精齿轮集团有限公司、南京高速齿轮制造有限公司、南京高特齿轮箱制造有限公司、南京高精船用设备有限公司等十多家控股子公司。拥有职工近7000人，教授级高工36人，享受政府津贴的专家5人，工程技术人员占职工总数的30%。

展望未来，中国传动豪情满怀，信心百倍。“我们的成员来自世界各地，我们的材料来自世界各地，我们的设备来自世界各地，我们的管理也来自世界各地，我们的市场投向世界各地。”
中国传动，必将是世界的传动！

The Company

CHINA TRANSMISSION

Nanjing High Accurate Drive Equipment Manufacturing Group Co., Ltd ("China Transmission" for short hereinafter), a large-scale backbone enterprise with considerable strength in the world of transmission equipment in China, is devoted to R&D, manufacturing and distribution of different kinds of mechanical transmission equipment. Its predecessor, Nanjing Machine Tools Repair Factory, was established in 1969 and expanded into a factory specializing in manufacturing gears, with the name changed into Nanjing High-Speed Gearbox Factory, which was restructured into a stock company in 2001, listed in Hong Kong in 2007 with the stock name of "China High-Speed Transmission".

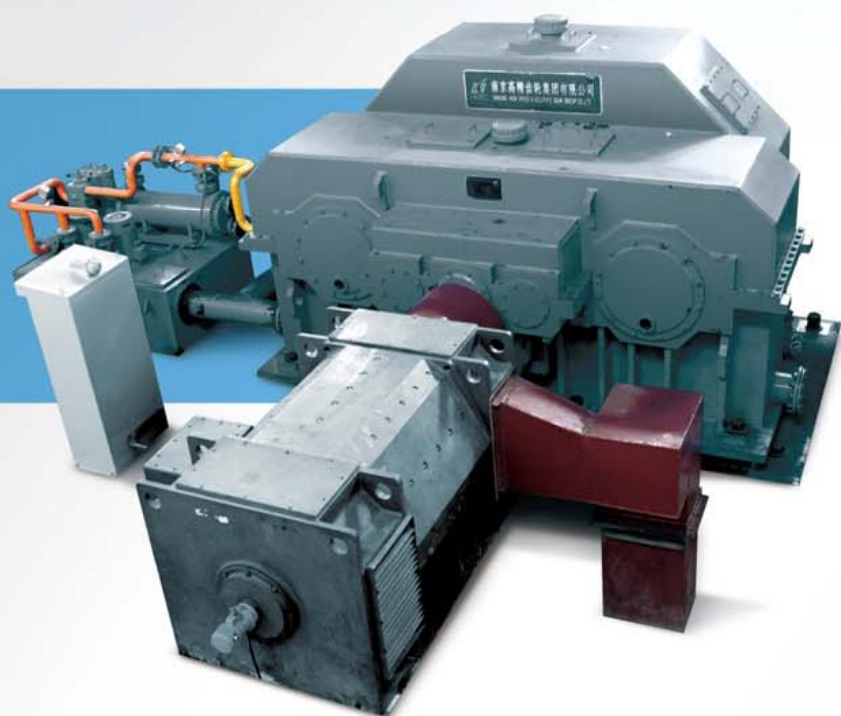
Sticking to the enterprise spirits of "constantly pursuing improvement and diligently striving for perfection", the company has developed into a leading enterprise after forty-odd-year growth and accumulation. Products of the company, involved in multiple fields including metallurgy, building materials, electric power, new energy, rail transit, ships, mines and chemical industry, are in a leading position in the world in terms of the technology, equipment and performance. In the past few years, the company has kept developing new products through lasting and highly efficient technological transformation, investment in R&D of expandable independent messaging and seeking increasing perfection in manufacturing processes, making itself stand on the way to rapid development. Now with all the economic indicators showing the tendency to virtuous growth, the company ranks the second in the industry of industrial gears throughout the world.

Brilliant technology originates from first-class team. China Transmission has 10-odd holding subsidiaries, including Nanjing High Accurate Drive Equipment Manufacturing Co., Ltd, Nanjing High-Speed and Accurate Gear (Group) Co., Ltd, Nanjing High-Speed Gear Manufacturing (Group) Co., Ltd, Nanjing Gaote Gearbox Manufacturing Co., Ltd, and Nanjing High Accurate Marine Equipment Co., Ltd, with nearly 8000 employees, among whom 36 are senior engineers with the title of professors and 5 are experts enjoying the government allowances and 30% are technicians.

China Transmission is full of ambitions, confident in its future development. "From all over the world come the members, materials, equipment and management, where the market will be established." China Transmission is bound to set the whole world moving ahead.

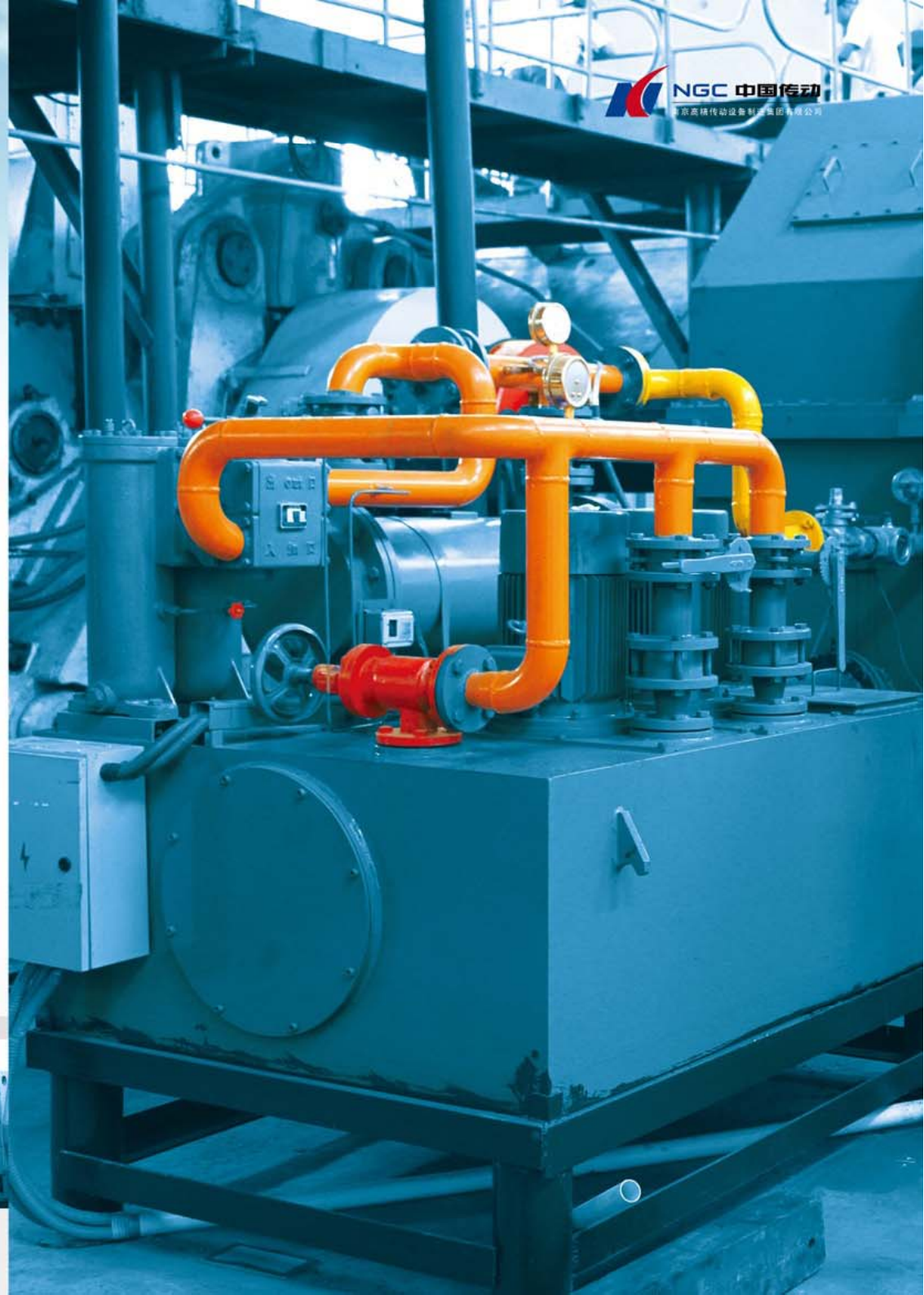
ZT120 榨糖机

I ZT120 Sugarcane presser



技术参数 | Technical Parameter

项目 Item	参数 Parameter
电机功率 Power of electric motor	1000KW
输入转速 Input speed	600~1200rpm
实际速比 Actual velocity ratio	99.81
额定输出扭矩 Rating output torque	1200KN.m



ZT150 榨糖机

■ ZT150 Sugarcane presser



技术参数 | Technical Parameter

项目 Item	参数 Parameter
电机功率 Power of electric motor	700KW
输入转速 Input speed	500~1200rpm
实际速比 Actual velocity ratio	113.23
额定输出扭矩 Rating output torque	1500KN.m



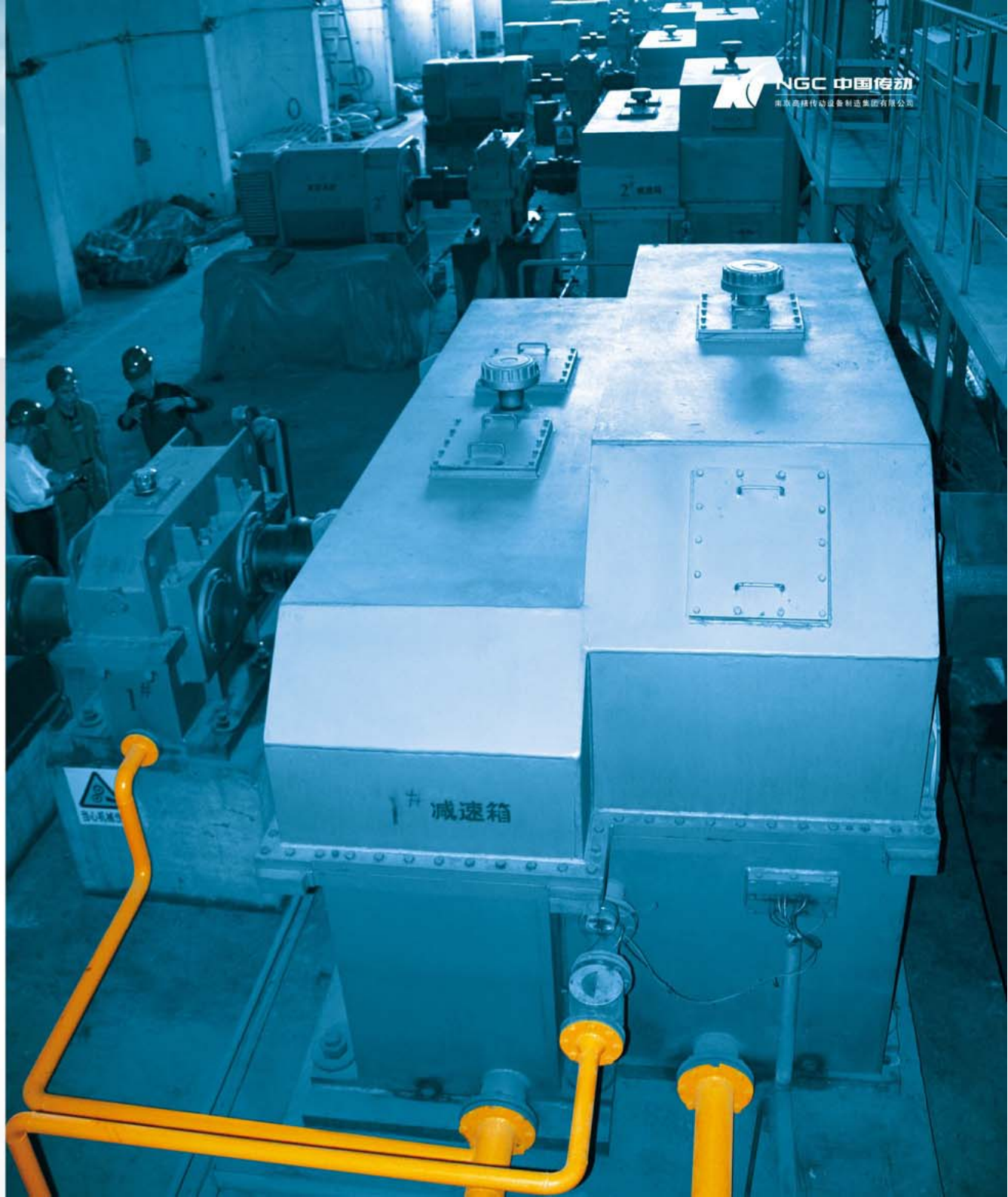
ZT180 榨糖机

I ZT180 Sugarcane presser



技术参数 | Technical Parameter

项目 Item	参数 Parameter
电机功率 Power of electric motor	900KW
输入转速 Input speed	500~1200rpm
实际速比 Actual velocity ratio	120.86
额定输出扭矩 Rating output torque	1800KN.m



ZT320 榨糖机

■ ZT320 Sugarcane presser



技术参数 | Technical Parameter

项目 Item	参数 Parameter
电机功率 Power of electric motor	1200KW
输入转速 Input speed	500~1200rpm
实际速比 Actual velocity ratio	335.7
额定输出扭矩 Rating output torque	3200KN.m



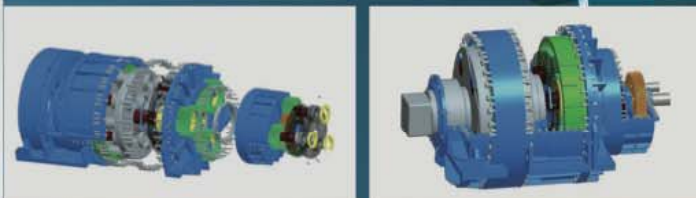
行星榨糖机齿轮箱

Planetary Gearbox for Sugarcane Press Machine



技术参数 | Technical Parameter

项目 Item	参数 Parameter
电机功率 Power of electric motor	2000KW
输入转速 Input speed	750rpm
实际速比 Actual velocity ratio	107.876
额定输出扭矩 Rating output torque	2750KN.m



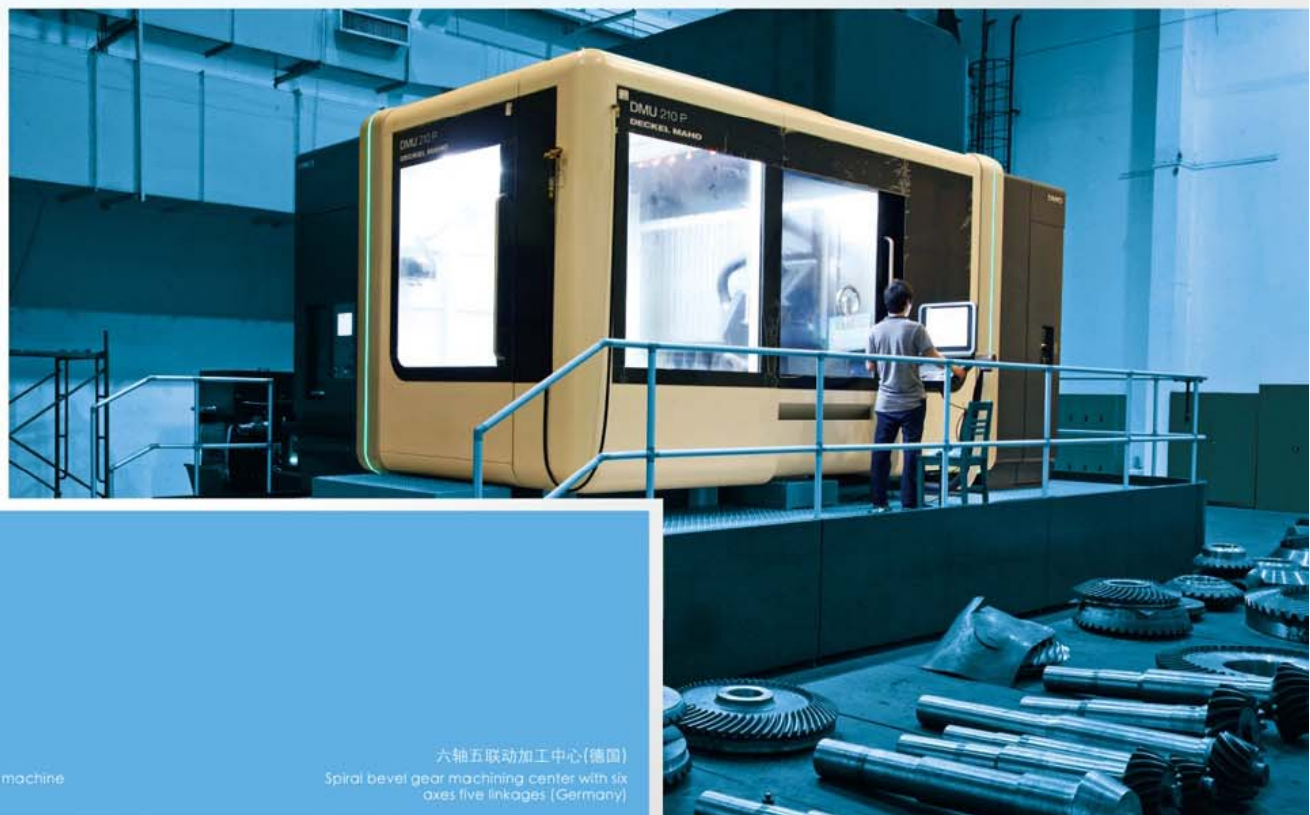
先进的加工设备

Up-to-date Machining Equipments



先进的加工设备

Up-to-date Machining Equipments



先进的加工设备

Up-to-date Machining Equipments



高速滚齿机P1200(意大利)
P1200 high efficiency hobbing machine (Italy)



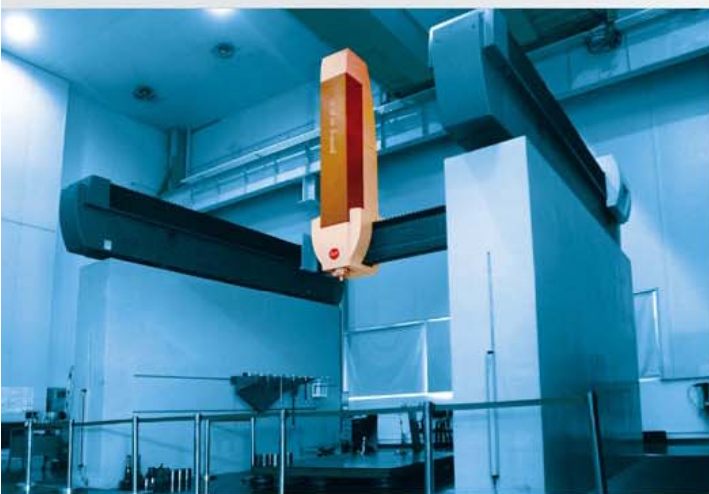
磨齿机HELIX700(德国)
HELIX700 gear grinding machine (Germany)



内外齿成形磨，加工直径3.2m，
模数40mm(德国)
Internal and external gear profile grinding machine
with a machining diameter of 3.2m
Modulus 40mm (Germany)

先进的加工设备

Up-to-date Machining Equipments



三坐标测量仪(德国)
HELIX700 gear grinding machine (Germany)

大型渗碳炉加工直径4m(奥地利)
Large scale carburizing furnace with a
processing diameter of 4m (Austria)



榨糖行业用齿轮箱业绩表

Reference list for the gearbox
used in the sugarcane pressing industry

型号 Model	额定输出扭矩(t.m) Rating output torque (t.m)	数量(台) Quantity (set)	用户 Users
ZT80	80	1	云南勐省南华 Yunnan Mengsheng Nanhua
ZT90	90	10	云南临沧南华 Yunnan Lincang Nanhua
ZT120	120	11	广西东门南华/龙州南华 Guangxi Dongmen Nanhua / Longzhou Nanhua
ZT150	150	5	广西良庆冠桂 Guangxi Liangqing Guangui
ZT160	160	5	广西来宾东糖 Guangxi Laibin Dongtang
ZT180	180	14	广西上上/云南英茂 Guangxi ShangShang / Yunnan Yingmao
ZT320	320	2	圭亚那斯撒尔顿现代化 Guyana Skelton Modern

