



Case study

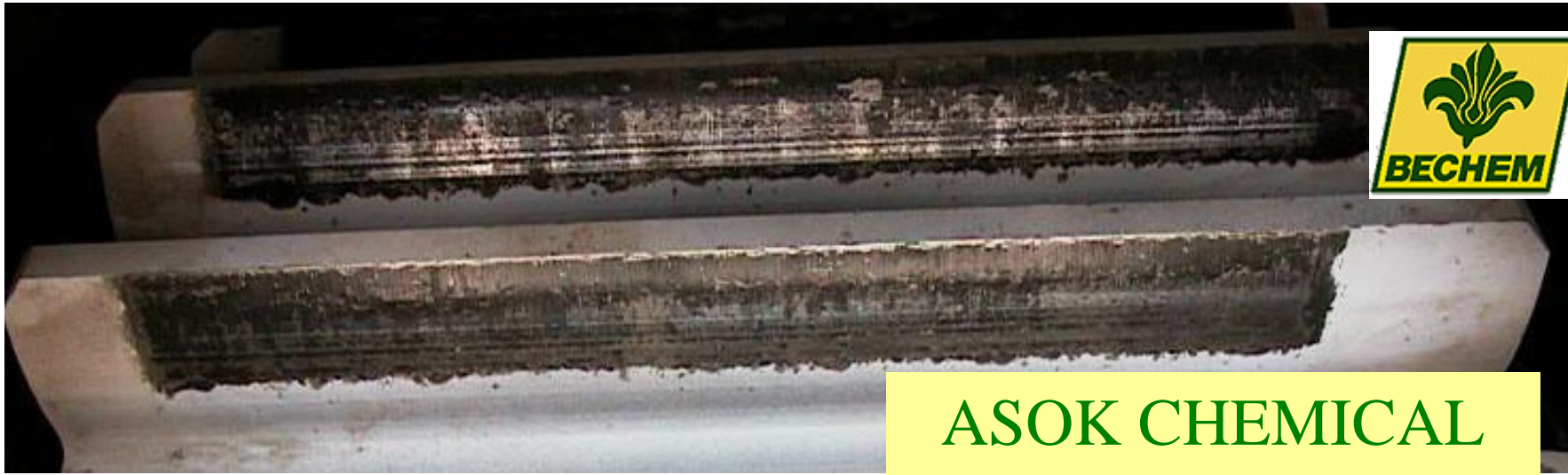
BERULIT EL 420 and BERULIT GA 800

ASOK CHEMICAL

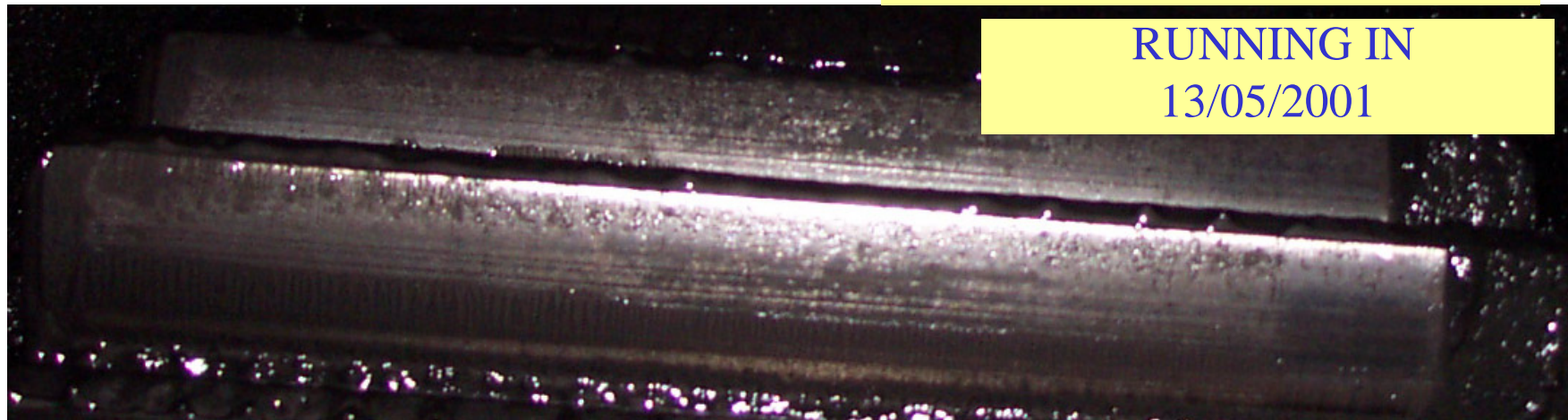
PAKCHONG



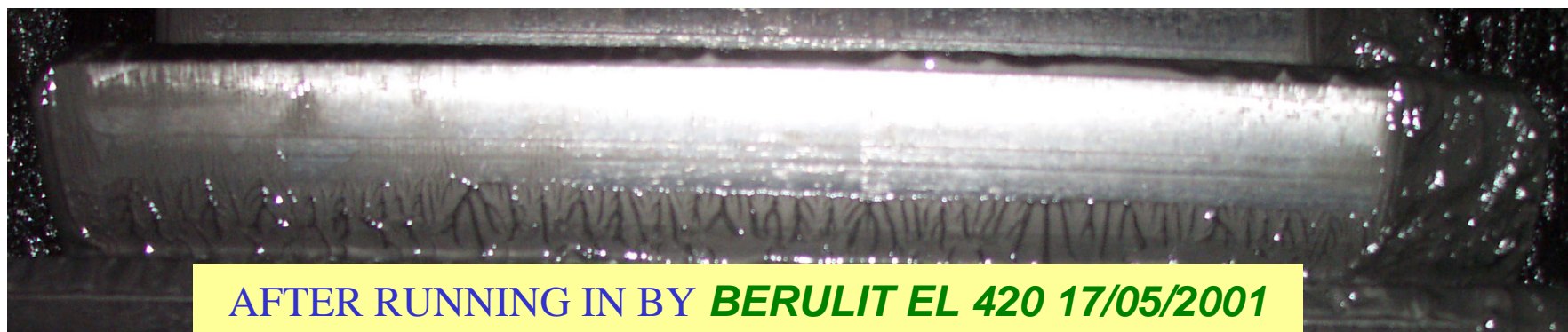
C.T.L.INTERLUBE CO.,LTD



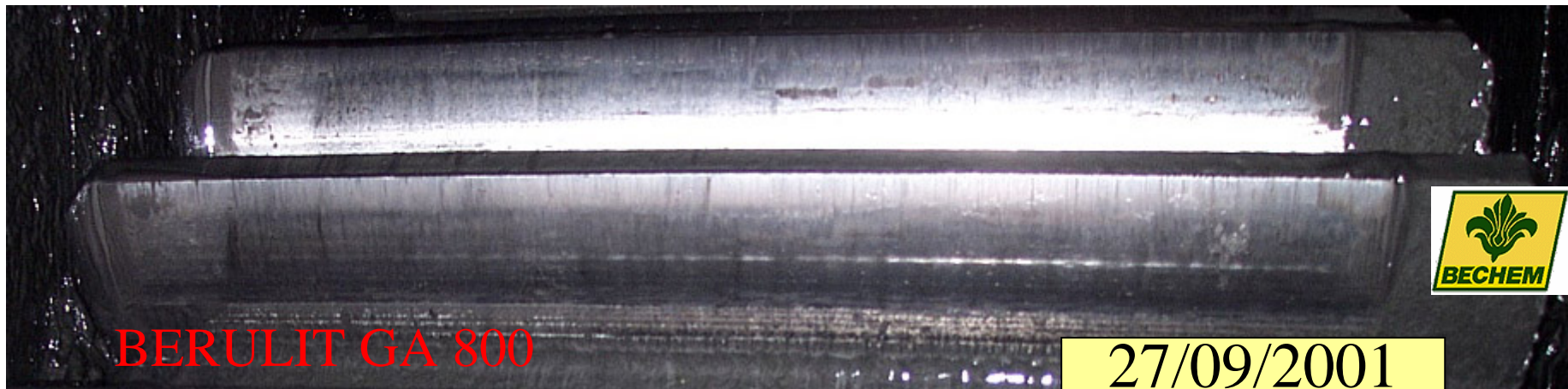
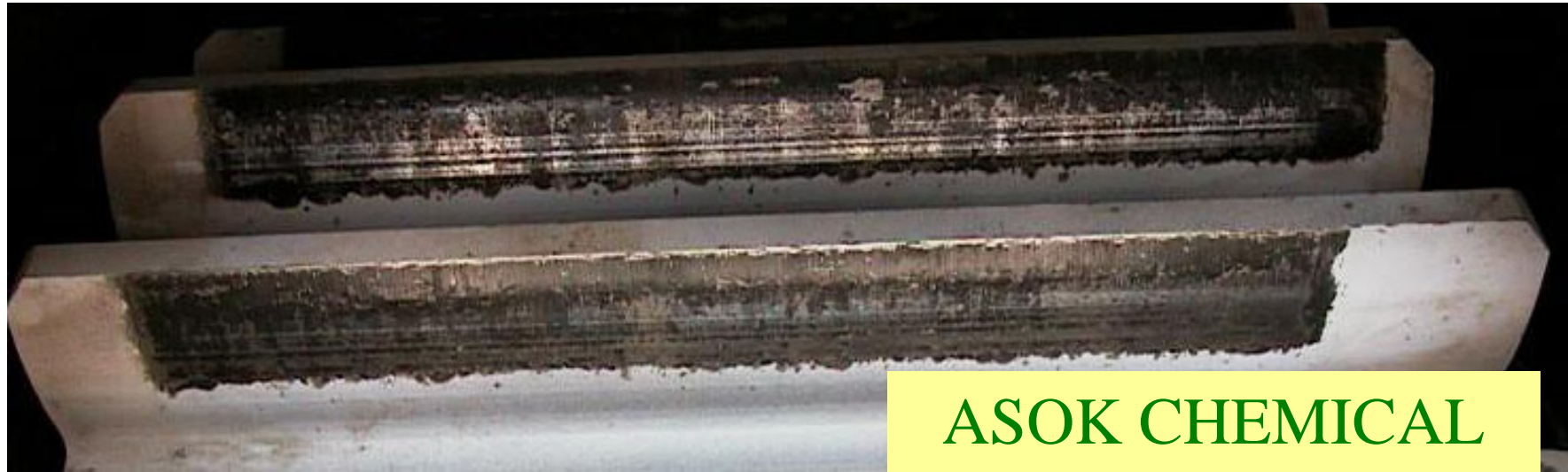
ASOK CHEMICAL

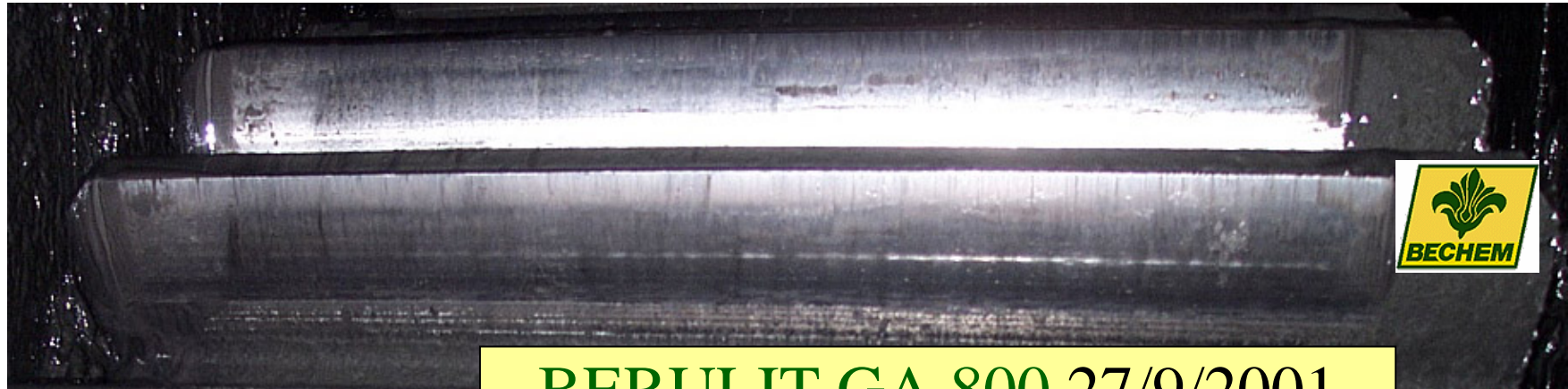


RUNNING IN
13/05/2001



AFTER RUNNING IN BY **BERULIT EL 420** 17/05/2001





BERULIT GA 800 27/9/2001

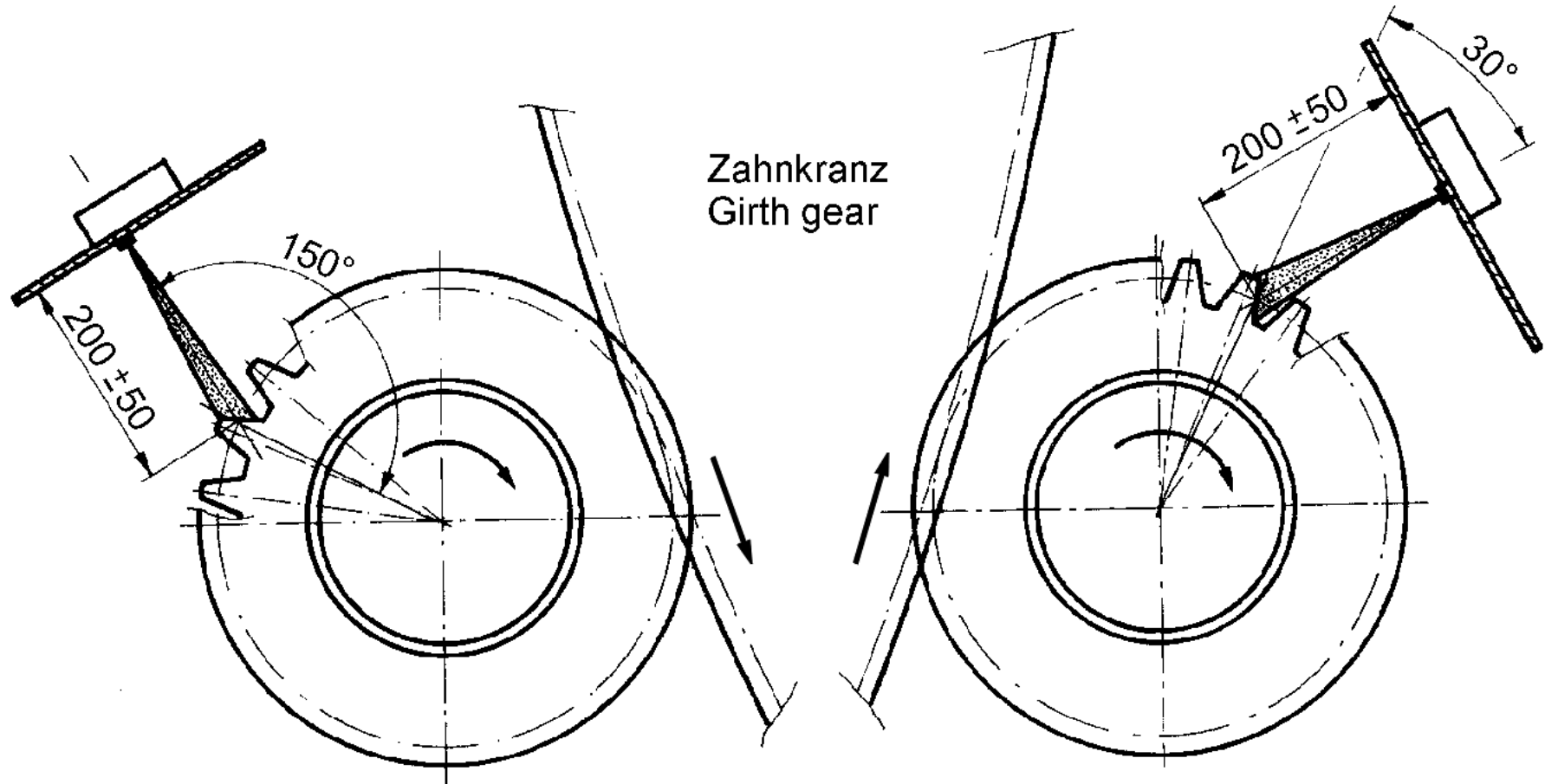


BERULIT GA 800 27/10/2001



Einlaufendes Ritzel
Running-in pinion

Auslaufendes Ritzel
Running-out pinion

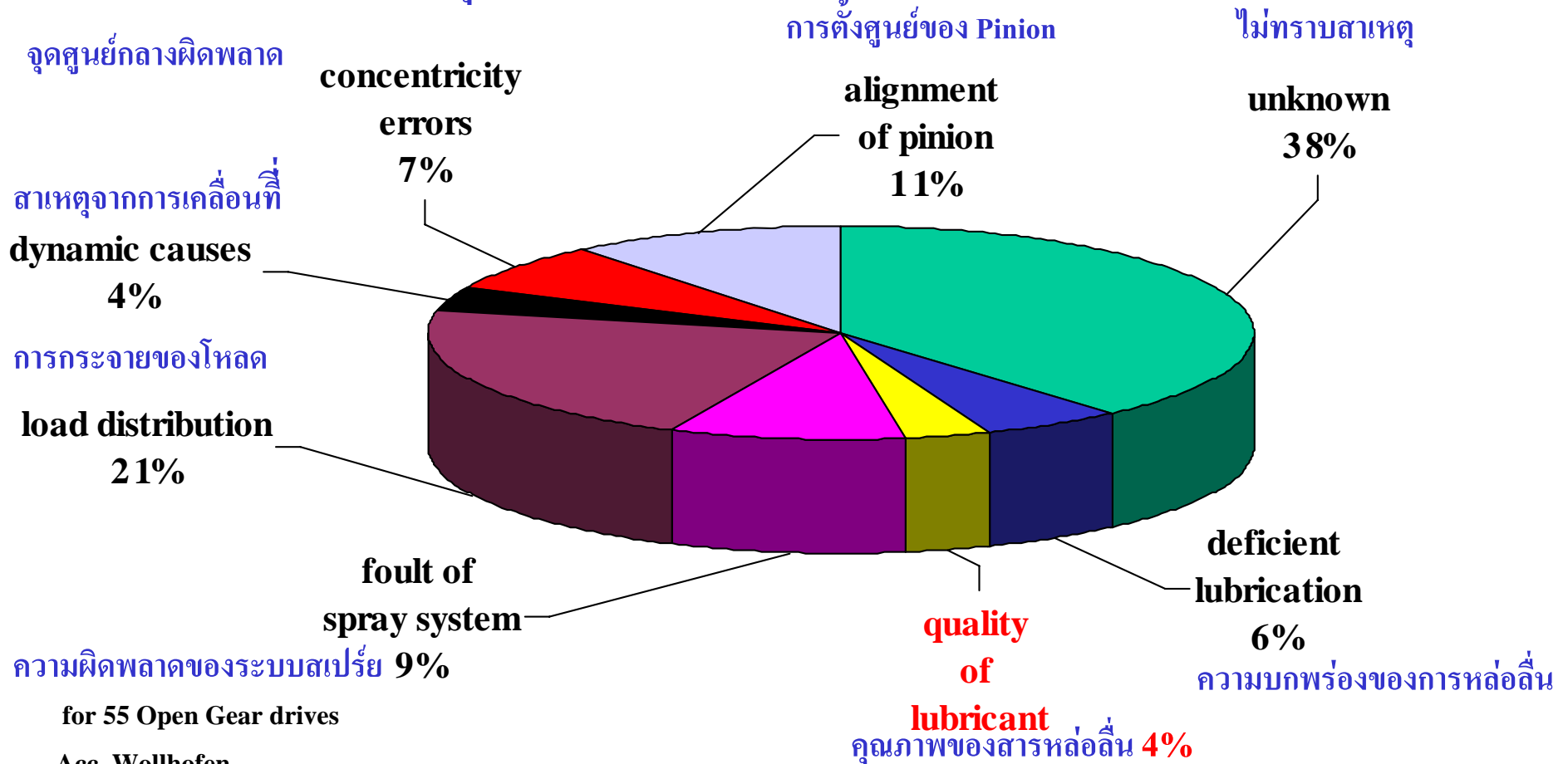


การติดตั้งระบบสเปร์ย์,องศา,ระยะจากหัวสเปร์ย์ไปยังฟันเกียร์



Causes of Tooth Flank Damages , Frequency in %

- สาเหตุความเสียหายของฟันเกียร์ โดยคิดเป็นจำนวนร้อยละ



for 55 Open Gear drives

Acc. Wollhofen



BUCKET WHEEL
BERULIT GA 2500



BERUGEAR W 4000 DEMAG
H 95



BECHEM BERULIT GA400



ROTARY KILN PINION GA 800



ROTARY KILN PINION GA 800



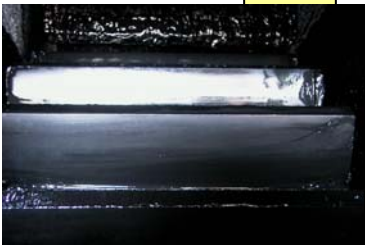
BERULIT GA 800 4 YEARS



BERULIT GA 800
DEMAG H 255 9000 HOURS



SUGAR INDUSTRY
BERUGEAR GS 320 BM



BERULIT GA 800 4 YEARS



BERUGEAR G 5000 SUGAR INDUSTRY



BERUGEAR G 5000 SUGAR INDUSTRY



BERUGEAR G 5000 SUGAR INDUSTRY



OPEN GEAR
BERUGEAR GS 1500 BM